

ENVIRONMENTAL EDUCATION



WARWICKSHIRE COUNTRY PARKS



GET OUTDOORS IN OUR PARKS

Country Parks have a programme of 'hands on' outdoor activities encouraging children to discover the natural world. Come and explore our variety of habitats including meadows, woodland and ponds. We have purpose built education centres at Kingsbury Water Park and Ryton Pools Country Park; we also offer activities at Hartshill Hayes Country Park.

ACTIVITIES

Our activities core values will help reinforce:

Resilience – working in an unfamiliar environment, finding things that are new to you

Teamwork – looking after each other, recording information for your team, collaborative learning opportunities with specific roles

Independence – keeping safe, expanding your knowledge

We hope a visit to country parks will help children:

Learn from mistakes, bounce back and try again

Try new things with a 'can do' attitude

Believe that the harder they work, the better they will get at the things that they do

Never give up

Love learning

Concentrate

Keep on trying when challenges occur

Think their way through problems

Ask questions and think about our world

Make links and notice patterns in their experiences

RYTON POOLS COUNTRY PARK



Ryton Pools
COUNTRY PARK



Ryton Pools Country Park is an ideal place for school visits with excellent opportunities for learning about wildlife, nature and the environment. We have ponds, meadows, woodlands, picnic areas and a number of trails all set within our 100 acre park. The site was formerly a sand and gravel quarry, a landfill site, and finally by 1996 the site was landscaped and began its life as Ryton Pools Country Park.

Our classroom is fully equipped, and provides a base for your day, plus indoor and outdoor spaces for lunch. Add in our playgrounds and café and it adds up to an enjoyable visit for all.

RYTON ROAD, BUBBENHALL
COVENTRY, CV8 3BG
02476 754008



KINGSBURY WATER PARK



BODYMOOR HEATH
SUTTON COLDFIELD, B76 0DY
01827 872 660

Kingsbury Water Park is 630 acres of wetlands, woodland, water and nature reserve providing endless opportunities for outdoor learning and experiences. The park is a lovely, safe, accessible place to visit with your pupils and we offer a range of curriculum linked, engaging activities.

Our classroom is fully equipped, and provides a base for your day plus an indoor space for lunch (or there are plenty of places for picnics too). Add in our playgrounds, gift shop and café for an enjoyable visit for all.



HARTSHILL HAYES COUNTRY PARK



OLDBURY RD,
NUNEATON, CV10 0TE
01827 872 660

Hartshill Hayes Country Park is a glorious hidden gem with its 137 acres offering woodlands, open hilltop meadows and panoramic views over the Anker Valley. The park has a long history of human use and habitation and the woods are ancient and species rich; a fantastic place for learning about wildlife, nature and history. Facilities on site include a playground, toilets and an outdoor shelter.

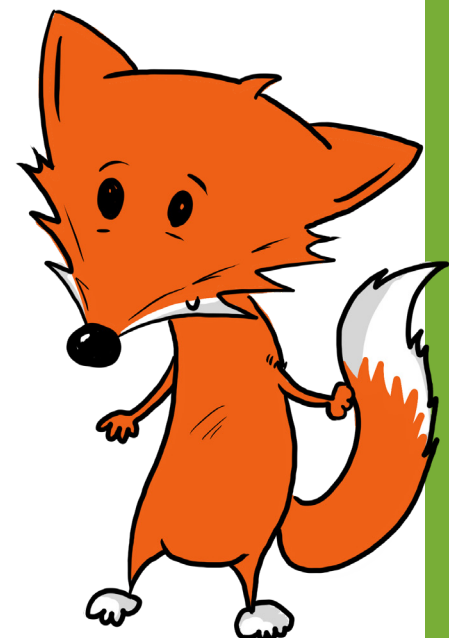


HOW YOUR DAY WILL WORK

Our morning sessions start around 10:00 and afternoon around 12:30. We are flexible with timings and we will discuss what suits your group with you – we can, for example, timetable in a short break.

When you arrive at any of our sites the Rangers will meet you in the car park and walk you to the classroom. Your class will be able to store their lunches and belongings in the classroom whilst you're out doing your chosen activity.

If you choose a half day activity you are welcome to stay on the site longer, however this will be unguided.



SESSION COSTS

£5 per child for 1/2 day

£9 per child for full day



HOW TO BOOK YOUR VISIT

We run the school activities from February through to November.

To discuss your visit, check availability and make a booking, please contact us on the numbers below.

Ryton Pools Country Park: 02476 754008

Kingsbury Water Park & Hartshill Hayes Country Park:
01827 872 660 or email us on **countryparkseducation.gov.uk**

Once you have made your provisional booking please, complete and return your booking form to us. This will confirm your booking.

RISK ASSESSMENT

We have full risk assessments for our service. You are welcome to download these from our website. We do offer, and highly recommend, site pre visits. We can discuss the activities chosen and show you the areas that your class will be using. One of our team can arrange this for you.

Please note in the event of a forecasted weather warning from the Met office, for the date of your visit, this is the procedure we will follow to keep us all safe.

Yellow Weather Warning

We will keep an eye on the forecast in case it necessitates changes to the programme you have booked. We may decide to alter activities on the day if the weather worsens, which we will discuss with you.

Amber Weather Warning

This means an increased likelihood of bad weather affecting your visit. We will assess the situation, and phone you prior to the visit to discuss the need to change activities or change the date. We will offer alternative dates if the decision is taken to cancel.

Red Weather Warning

The visit will need to be cancelled because of likely risks to life from the weather - it would be deemed unsafe to go ahead. We will phone you to discuss the situation prior to your visit and offer alternative dates.



CLASS GROUPS



All of our activities are based on one class being split into 6 or less groups, each with an accompanying adult prepared to help! (maximum of 6 children in a group).

Please use these 6 group names to divide your class before you arrive.



BADGERS



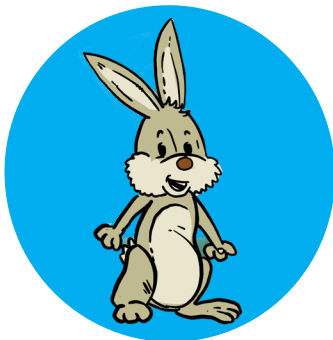
FOXES



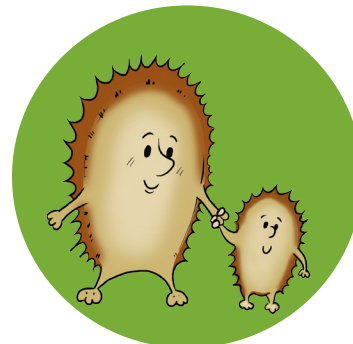
SQUIRRELS



OWLS



RABBITS



HEDGEHOGS

WHAT TO WEAR ON THE DAY

This is really important; children will enjoy their visit to the park fully if they are suitably dressed for the occasion.

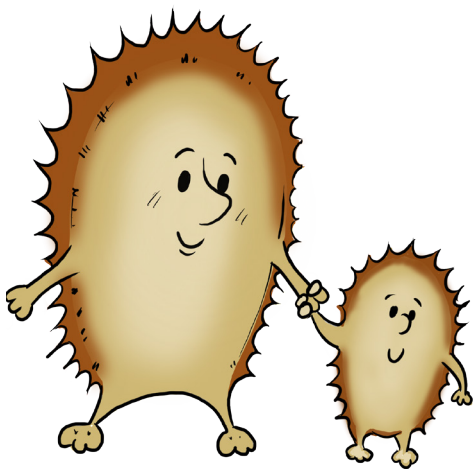
Please encourage children to wear clothing that they are allowed to get dirty!

SUMMER

- Lightweight long sleeves and long trousers
- Sturdy trainers or Wellies
- Sun cream, sun hat and insect repellent

WINTER

- Long sleeve warm layers
- Waterproof coat and trousers
- Hat, gloves and scarf
- Sturdy trainers or Wellies



ROLE OF ACCOMPANYING ADULTS AND RATIOS

We ask you to ensure enough adults accompany you to comply with our adult to child ratios (see below), and that they are happy to supervise and support a small group of pupils when undertaking activities that the Ranger is leading.

1:6 adult to child for Reception, Key Stage 1 and 2

1:4 adult to child for Pre school

First aid is the responsibility of the school whilst on site.

BEHAVIOUR CODE



We will make every effort to make your visit enjoyable. You can help by making sure pupils are adequately supervised at all times. The behaviour and discipline of pupils is the responsibility of teachers and accompanying adults

Please follow our behaviour code during your visit:

- Treat wildlife and nature kindly. No squashing, squishing, head or leg pulling
- Do not pet or approach dogs, they can be scared of us
- Do wear appropriate clothing - no fairy costumes or super hero outfits!
- No wild parties in the bird hides ...Shhhhhh, the birds like it quiet
- Walk sensibly; do not run.... unless the ranger runs or walks like a crazy minibeast!!
- Respect other visitors enjoying their visit
- Do not be rubbishbin it
- Be cautious around water, some lakes are deep and have steep sides
- Stick with your team and the ranger...they have the key for the lunch box room!
- Listen to the ranger and have a big smile ready

We reserve the right to curtail sessions if groups misbehave

ACTIVITIES

Pre-school/Reception ● KS1 ● KS2 ●



Ryton Pools
COUNTRY PARK



RYTON POOLS COUNTRY PARK



Dinosaurs and fossils ½ day ●●

Enter the fascinating world of dinosaurs. Follow the dinosaur trail to the woods, excavate 'fossil' eggs and dinosaur bones, make a giant stick dinosaur, and use your imagination to create a prehistoric world.

Curriculum Links: Imagination, speaking/listening, creativity, social skills and understanding of the natural world.



Wild Woods ½ day ●●

Enjoy playing creatively in the woods and take part in activities based on Forest School principles.

Curriculum Links: Imagination, speaking/listening, creativity, social skills and understanding of the natural world.



Minibeast hunting ½ day ●●●

Come and meet the woodland meadow invertebrates that make their homes in our park. Use our equipment to catch them and observe how they move and what they look like. Discover what they eat and get eaten by and try to work out how they are adapted to survive in their environment.

Curriculum Links: working scientifically, animals including humans, living things in their habitats



Pond dipping ½ day ●●

Come pond dipping to find the amazing range of invertebrates that live in our aquatic habitat. Discover how they move, what they eat, who they depend on and consider how they are adapted to survive in their environment.

Curriculum Links: working scientifically, animals including humans, living things in their habitats



Nocturnal Animals ½ day ●●

A fun introduction to the often-unseen nocturnal world. We will go on an adventure using all our 'nature detective sense skills' to investigate which animals come out at night. Learn why they are nocturnal, what super senses they have and what they look like.

Curriculum Links: Habitats, identification, camouflage, adaptations, trees, plants and animals, senses, animals including humans, living things in their habitats, seasonal change



Art in the Park ½ day ●●●

Unleash the Andy Goldsworthy in your pupils. Nature is full of objects to use as art and craft materials. As we walk around the park, look out for fallen leaves, petals, sticks and stones. Use your finds and the natural environment as inspiration to create a masterpiece.

Curriculum links: Early Years Learning Goals Links, Communication and Language, Personal, Social and Emotional Development, Understanding the World, Expressive Arts and Design, spoken language, Design Technology, Art.



Natural shelters and dens ½ day ●●

Have you got what it takes to survive in the woods? Take on the challenge of den building using natural materials, then crack the code to get your luxuries. Will it be big enough for your team and can you build a home for your woodland pet?

Curriculum links: Survival, teamwork, problem solving, communication skills, co-operation, living things in their habitats, everyday materials, design and technology, physical education.



Beginners Bushcraft full day ●

Have fun trying out simple survival skills in the woods. This outdoor adventurous activity is a great opportunity to work in small teams and achieve together with activities like shelter building, knots, tracking and fire lighting without matches and cooking marshmallows over a campfire. Learn about the risks, stay safe and have fun!

Curriculum Links: Geography, Science, Design technology, Art



Stone Age full day ●

Step back in time to the Stone Age and discover how life used to be. Follow a timeline back in history to the woods and find out how fire, clothing, tools, shelter and mark making were important to stone age people. Stalk a sabre tooth tiger and cook marshmallows over a campfire.

Curriculum links: History, survival, teamwork, problem solving, communication skills, co-operation, materials, habitats



Orienteering ½ day ●

A practical introduction to map reading and compass skills. Working in teams, use our maps and compasses to find your way around the permanent course on the park. Which teams will be successful, and will anyone get lost?

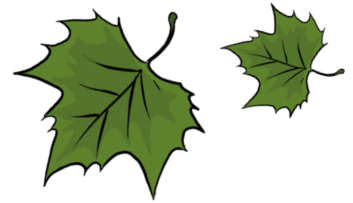
Curriculum Links: human and physical geography

ACTIVITIES

Pre-school/Reception ● KS1 ● KS2 ●



Kingsbury
WATER PARK



KINGSBURY WATER PARK



Dinosaurs and fossils ½ day ●●

Enter the fascinating world of dinosaurs. Follow the dinosaur trail to the woods, excavate 'fossil' eggs and dinosaur bones, make a giant stick dinosaur, and use your imagination to create a prehistoric world.

Curriculum Links: Imagination, speaking/listening, creativity, social skills and understanding of the natural world.



Wild Woods ½ day ●●

Enjoy playing creatively in the woods and take part in activities based on Forest School principles.

Curriculum Links: Imagination, speaking/listening, creativity, social skills and understanding of the natural world.



Minibeast hunting ½ day ●●

Come and meet the woodland meadow invertebrates that make their homes in our park. Use our equipment to catch them and observe how they move and what they look like. Discover what they eat and get eaten by and try to work out how they are adapted to survive in their environment.

Curriculum Links: working scientifically, animals including humans, living things in their habitats



Pond dipping ½ day ●●●

Come pond dipping to find the amazing range of invertebrates that live in our aquatic habitat. Discover how they move, what they eat, who they depend on and consider how they are adapted to survive in their environment.

Curriculum Links: working scientifically, animals including humans, living things in their habitats



Art in the Park ½ day ●●●

Unleash the Andy Goldsworthy in your pupils. Nature is full of objects to use as art and craft materials. As we walk around the park, look out for fallen leaves, petals, sticks and stones. Use your finds and the natural environment as inspiration to create a masterpiece.

Curriculum links: Early Years Learning Goals Links, Communication and Language, Personal, Social and Emotional Development, Understanding the World, Expressive Arts and Design, spoken language, Design Technology, Art.



Nocturnal Animals ½ day ●●

A fun introduction to the often-unseen nocturnal world. We will go on an adventure using all our 'nature detective sense skills' to investigate which animals come out at night. Learn why they are nocturnal, what super senses they have and what they look like.

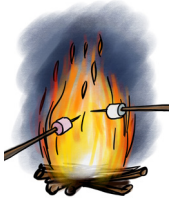
Curriculum Links: Habitats, identification, camouflage, adaptations, trees, plants and animals, senses, animals including humans, living things in their habitats,



Natural shelters and dens ½ day ●●

Have you got what it takes to survive in the woods? Take on the challenge of den building using natural materials. Will it be big enough for your team and can you build a home for your woodland pet?

Curriculum Links: Survival, teamwork, problem solving, communication skills, co-operation, living thing in their habitats, everyday materials, design and technology, physical education.



Beginners Bushcraft ½ day ●

Have fun trying out simple survival skills in the woods. This outdoor adventurous activity is a great opportunity to work in small teams and achieve together with activities like shelter building, knots, tracking skills and fire lighting without matches and finishing by cooking marshmallows over a campfire. Learn about the risks, stay safe and have fun!

Curriculum Links: Geography, Science, Design technology, Art



Orienteering Upper KS2 ½ day ●

A practical introduction to map reading and compass skills. Working in teams, use our maps and compasses to find your way around the permanent course on the park. Which teams will be successful, and will anyone get lost?

Curriculum Links: human and physical geography



Rivers Upper KS2 ½ day ●

We trace the River Tame's route through Birmingham on Ordnance Survey maps and then look at the river's journey on a slide show to see if we have interpreted the map accurately. We will take a walk to look at the river as it flows through the park and practice identifying physical features in the field.

Curriculum Links: human and physical geography, working scientifically, plants and animals including humans, seasonal change

ACTIVITIES

Pre-school/Reception ● KS1 ● KS2 ●

HARTSHILL HAYES COUNTRY PARK



Hartshill Hayes
COUNTRY PARK



Minibeast hunting ½ day ●●●

Come and meet the woodland and meadow invertebrates that make their homes in our park. Use our equipment to catch them and observe how they move and what they look like. Discover what they eat and get eaten by and try to work out how they are adapted to survive in their environment.

Curriculum Link: human and physical geography s: working scientifically, animals including humans, living things in their habitats



Animal tracks and trails ½ day ●●

Become a wildlife detective, enjoy being in Hartshill Hayes woods learning some fun facts about woodland animals. Delve into the woodland habitat and search for clues to discover who makes the woods their home.

Curriculum Links: working scientifically, animals including humans, living things in their habitats, seasonal change



Natural shelters and dens ½ day ●●

Have you got what it takes to survive in the woods? Take on the challenge of den building using natural materials, then crack the code to get your luxuries. Will it be big enough for your team and can you build a home for your woodland pet?

Curriculum Links: Survival, teamwork, problem solving, communication skills, co-operation, living thing in their habitats, everyday materials, design and technology, physical education.



Orienteering Upper KS2 ½ day ●

A practical introduction to map reading and compass skills. Working in teams, use our maps and compasses to find your way around the permanent course on the park. Which teams will be successful, and will anyone get lost?

Curriculum Links: human and physical geography



WARWICKSHIRE Country Parks

Thank you for visiting Warwickshire's Country Parks. Please use this form to give us your thoughts and feedback on your visit.

Type of Visit: Birthday party Event/activity School Visit Normal Park Visit

If you took part in an event, which event was it?

Which Park did you visit?

Burton Dassett Hills Country Park

Pooley Country Park

Offchurch Greenway

Hartshill Hayes Country Park

Ryton Pools Country Park

Stratford Greenway

Kingsbury Water Park

Kenilworth Greenway

Ufton Fields Nature Reserve

When did you visit?

Overall, how would you rate your visit?



How could we improve?

How did you find out about the event/party/park?

Is there anything else you'd like to add?

Thank you for taking the time to complete this form. Your feedback is important to us in our continuous efforts to improve visitor experiences at Warwickshire's Country Parks.

Once completed, please hand this card to a Ranger, drop it off at the Visitor Centre, or scan the QR code below to submit your answers online.

We appreciate your support and hope to welcome you back soon.



Scan here for
online version

